



Above & Beyond Boating
Personalised Training Specialists

Sea Safety



Neil Driscoll

Turning ideas on their head

Hayling Island Sailing Club,
Chichester Harbour



Safety - what has changed?



What would the crew do if you fall in?



Bob

What do we do if she falls over board?



Lifejacket activation



Hammer and manual

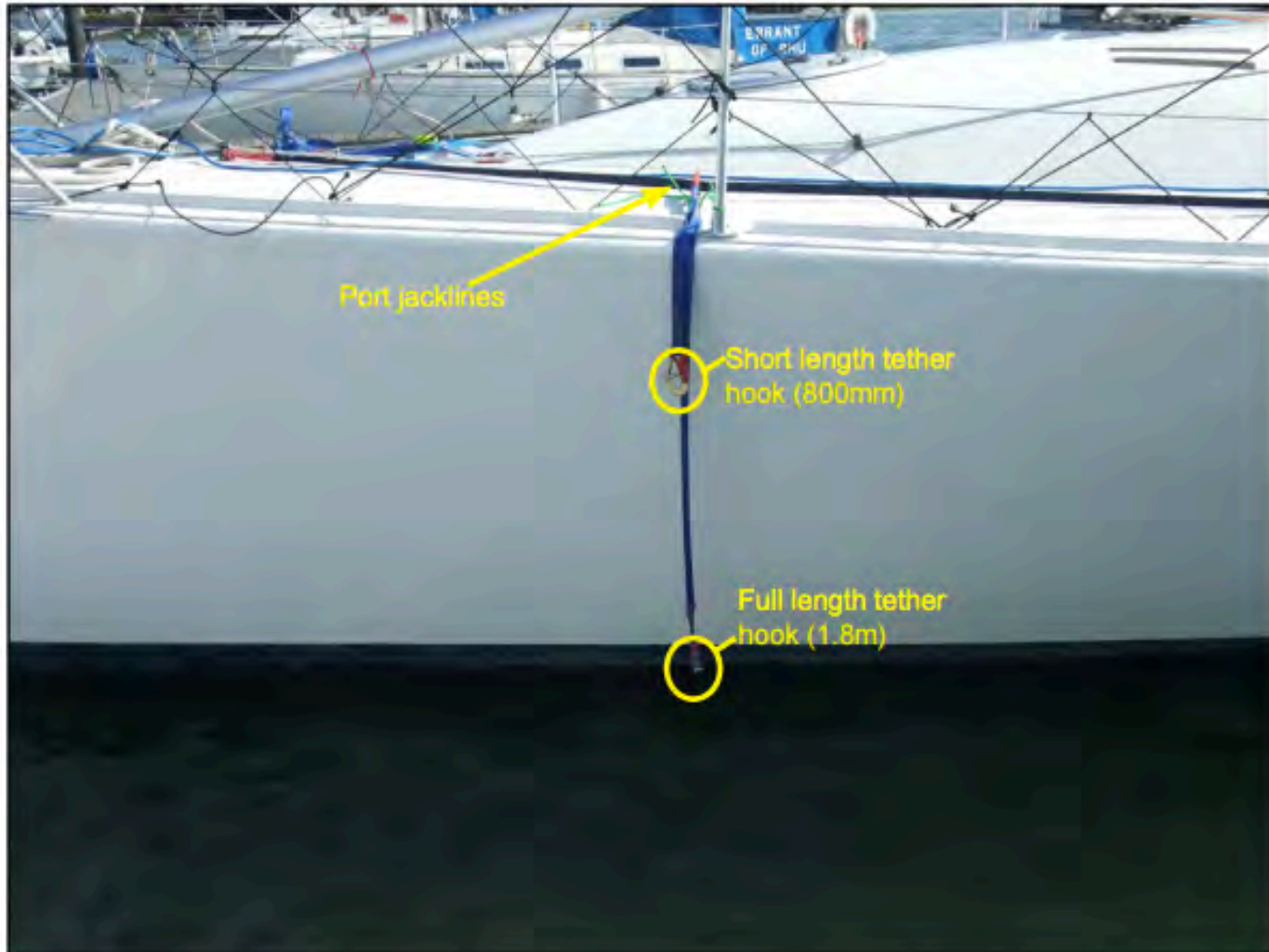


Manual only



Automatic and manual

Safety tethers



Fire, Flooding and Falling off



Fire, Flooding and Falling off



Fire, Flooding and Falling off



Things to consider

- I hear I forget
- I see I remember
- I do I understand
- ✓ 3 minutes is perfect
- ✓ Customise each time
- ✓ You do have time to do this



GPS and non GPS EPIRB's



Flares



Important Notes:

1. Marine repeaters are designated for vessel movements and the safety of vessels and persons. Chatter and other inappropriate use is not permitted and could endanger lives at sea.
2. Vessel operators are reminded that they must hold a minimum of a Marine Radio Operators VHF Certificate of Proficiency to use a VHF radio.
3. Repeater coverage is indicative only and may vary between vessels and propagation conditions.
4. This map is not to be used for navigational purposes.



Do you
log on
with
Marine
Rescue?

● Repeater Station	Signal (dBm)
● Town/City	-67 to -71
○ Not Owned by Marine Rescue NSW	-75 to -79
	-83 to -91

Plan compiled from information held in the Domestic Property & Geospatial Services Branch. INFORMATION ON THIS PLAN IS SUBJECT TO COPYRIGHT.

Nautical Miles
0 10 20 40 60 80

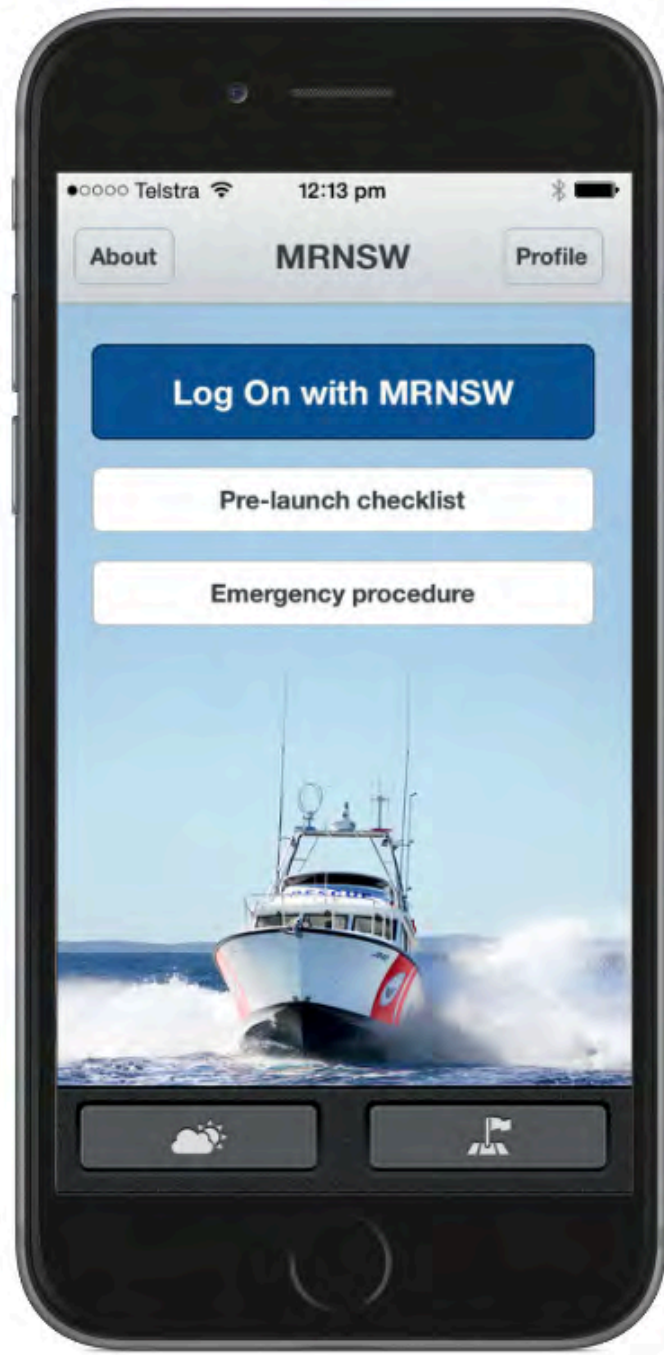
Kilometres
0 40 80 120 160

Scale at A4 sheet 1:4,250,000

Marine VHF Repeater Regional Coverage

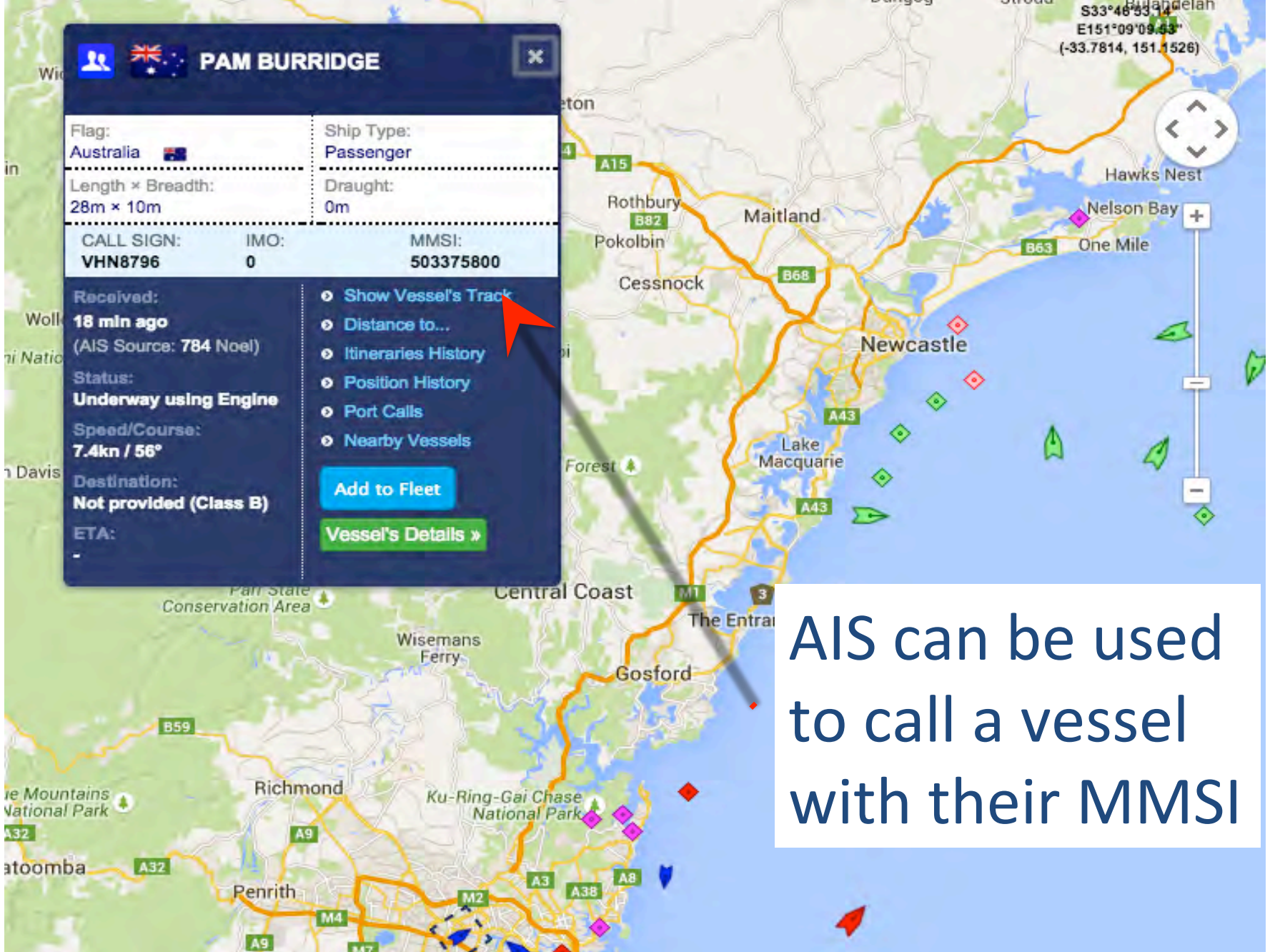
NSW Transport Roads & Maritime Services

Date Produced: 19 December 2014





Is your radio DSC enabled?



PAM BURRIDGE

Flag: Australia	Ship Type: Passenger	
Length x Breadth: 28m x 10m	Draught: 0m	
CALL SIGN: VHN8796	IMO: 0	MMSI: 503375800

Received:
18 min ago
(AIS Source: 784 Noel)

Status:
Underway using Engine

Speed/Course:
7.4kn / 56°

Destination:
Not provided (Class B)

ETA:
-

- Show Vessel's Track
- Distance to...
- Itineraries History
- Position History
- Port Calls
- Nearby Vessels

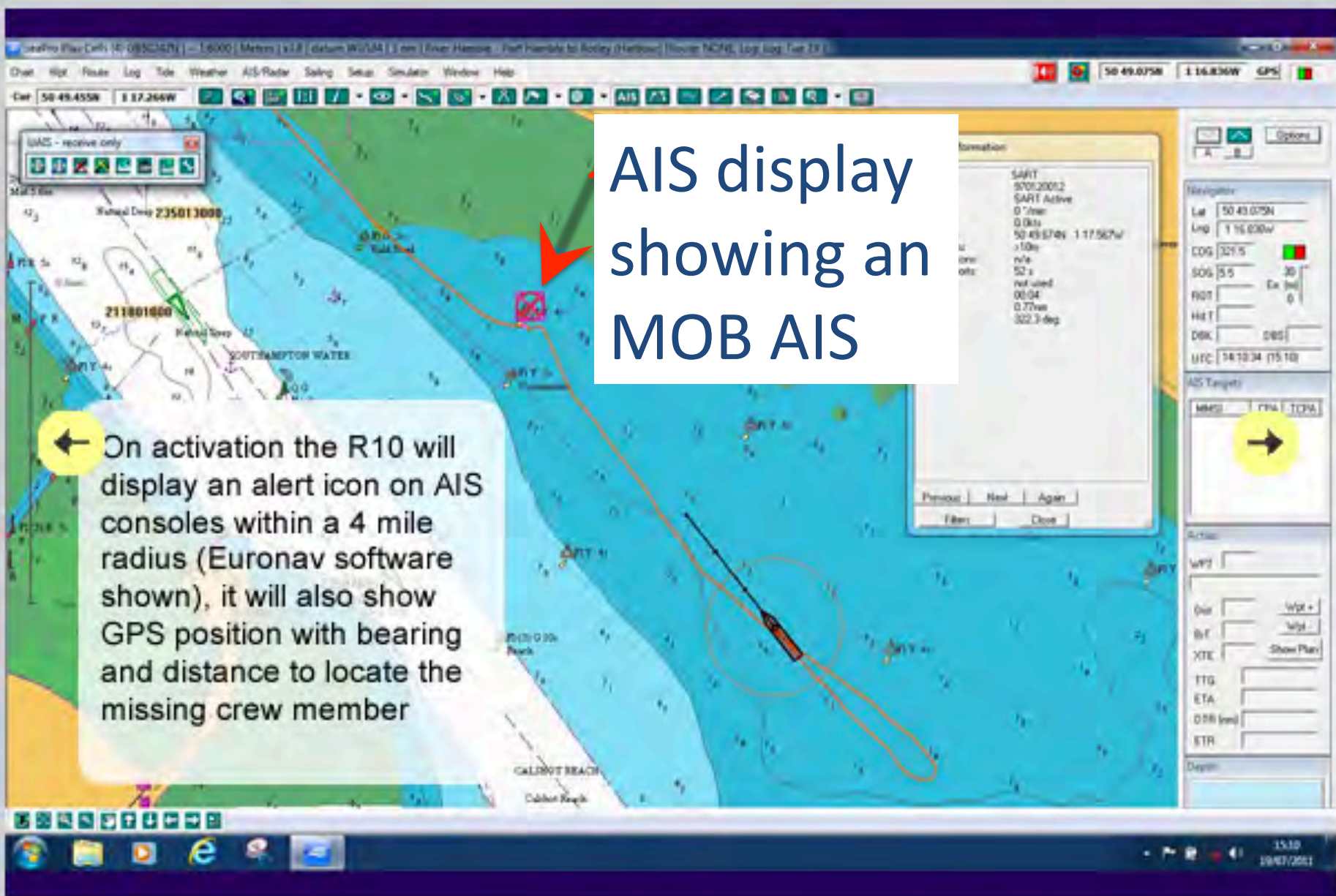
Add to Fleet

Vessel's Details

AIS can be used to call a vessel with their MMSI

This is a mark on the GPS after an MOB
– Have you ever tested this?





AIS display showing an MOB AIS

On activation the R10 will display an alert icon on AIS consoles within a 4 mile radius (Euronav software shown), it will also show GPS position with bearing and distance to locate the missing crew member







Above & Beyond Boating
Personalised Training Specialists

Question's



Neil Driscoll