



# Notice of Race & Sailing Instructions

for the

## **STEPPING STONE HOUSE REGATTA**

Thursday 16<sup>th</sup> March 2017

CONDUCTED BY THE ORGANISING AUTHORITY

ROYAL SYDNEY YACHT SQUADRON

## **1 RULES**

- 1.1 Racing will be governed by:
- The Racing Rules of Sailing (RRS) of the International Sailing Federation 2017-2020 (ISAF) as amended
  - The Prescriptions and Special Regulations of Australian Yachting (AY)
  - The Notice of Race
  - These Sailing Instructions as amended from time to time
- 1.2 If there is conflict between rules or regulations, other than RRS, the Sailing Instructions will prevail. This changes RRS 63.7.

## **2 ADVERTISING**

A boat and her crew shall comply with ISAF Regulation 20, Advertising Code.

## **3 ELIGIBILITY**

The regatta is open to all boats with a valid Category 7 (minimum) AY Special Regulations Equipment Compliance Form.

## **4 REGATTA OFFICE**

- 4.1 The Regatta Office will be the RSYS Sailing Office situated at:
- |            |                            |        |  |
|------------|----------------------------|--------|--|
| Address:   | 33 Peel Street, Kirribilli | Fax:   | (02) 9955 3404   |
| Telephone: | (02) 9017 0150             | Email: | <a href="mailto:ridley@rsys.com.au">ridley@rsys.com.au</a> |

- 4.2 The Official Regatta Notice Board is located below the RSYS Careening Cove Anchorage stairs.

## **5 CHANGES IN SAILING INSTRUCTIONS**

- 5.1 Any change in the Sailing Instructions shall be posted on the Official Notice Board by 1200 hours on the day it shall take effect.
- 5.2 Skippers will also be notified of any change in the Sailing Instructions at the pre-race skippers briefing to be held under the sail of the Careening Cove Anchorage from 1200 hours Thursday 16 March, 2017.

## **6 SIGNALS MADE ASHORE**

- 6.1 Signals made ashore shall be displayed on the RSYS Club flag mast located on the RSYS lawn.
- 6.2 Flag "AP" with two sounds indicated the race is postponed. The first Warning Signal will be made not less than thirty (30) minutes after the AP is lowered. (Amends RRS Race Signals)

## **7 SCHEDULE OF EVENTS**

- 7.1 There will be a light lunch available for competitors located in the Royal Sydney Yacht Squadron Careening Cove Anchorage from 1200 hours Thursday 16 March, 2017.
- 7.2 Skippers shall report to Royal Sydney Yacht Squadron Careening Cove Anchorage at 1300 hours Thursday 16 March, 2017 for a Skippers briefing to be conducted by the Sailing Office Staff.
- 7.3 Handicap starting time for the limit boat shall be 1400 hours.

## **8 THE COURSE / MARKS**

- 8.1 Boats shall proceed to all marks shown in the course below in the order listed and shall round (pass where appropriate) un-suffixed marks to Starboard and marks suffixed (P) to Port.

- 8.2 Course descriptions are as follows:

**Division 1** SFL – N2(P) - BB - SI - N2 - TB - SI - CI - SFL (approx. 11 miles)

**Division 2** SFL – N2(P) - BB - SI - N2 - TB - SI - SFL (approx. 10 miles)

- 8.3 Mark Descriptions

|     |  |
|-----|--|
| BB  | Beashel Mark – A Y buoy, south-west of Sow and Pigs  |
| CI  | Clarke Island – Summit of Clarke Island and Pile south of Clarke Island  |
| N2  | Naval Buoy No. 2 – Approximately 250m North West of Clarke Island  |
| SI  | Shark Island - Light north of Shark Island and yellow AY mark approx. 10 meters south east of the south cardinal mark off Shark Island |
| SFL | Start/Finish Line – Orange inflatable mark laid to the east of the Neutral Bay ferry lanes   |
| TB  | Taylor Bay Mark - AY Buoy in Taylor Bay  |

**9 STARTING AND FINISHING LINES**

- 9.1 The Start/Finishing Line off the RSYS Clubhouse will be the extension of the transit of two vertical blue lights, one mounted on the right most chimney of the clubhouse and one mounted above the Careening Cove Terrace area.
- 9.2 The outer limit of the line is Kurraba Point and the inner limit is an orange mark laid just to the east of the Neutral Bay ferry lanes. Boats shall not maneuver west of this orange mark before starting and shall leave it to starboard when starting and to port when finishing.

**10 STARTING SIGNALS**

- 10.1 The list of entries shall show the starting time for each boat.
- 10.2 Boats are to cross the line on the start of their handicap minute.
- 10.3 The official time to be used by the Race Officials can be obtained at the Skippers briefing or by phoning the Telstra Time Recording Service on 1194.
- 10.4 For Time reference only, the Race Committee shall hoist the following: (These flag signals may also be accompanied with a sound signal).
- 10.5 Starting signals will be made in accordance with RRS 26, amended as follows;

|                | <b>Time</b> | <b>Flag Up</b> | <b>Flag Down</b> |
|----------------|-------------|----------------|------------------|
| Warning Signal | 1355        | W ↑            |                  |
| Start          | 1400        |                | W ↓              |

**11 RECALLS**

There shall be no recall signals and it is the responsibility of each boat to determine whether it is over the starting line before its starting signal. A boat which infringes and fails to start subsequently to the satisfaction of the Race Committee is subject to a penalty of four places unless disqualified by the Race Committee.

**12 SHORTENING COURSE**

Should the course have to be shortened, there will be a vessel located at a mark of the course displaying International Code Flag "S" (with repetitive sound signals) indicating that the mark should be rounded/passed then head directly to the finish line. (Amends RRS 32)

**13 HANDICAPS**

Starting times shall be displayed on the Provisional List of Entries shall be distributed at the Competitors' Briefing.

**14 TURNS PENALTY**

The RRS 44.1 and 44.2 are changed so that the 720° turns are replaced by a 360° turn in the same direction including one tack and one gybe (Amends RRS 44.1 and 44.2).

**15 TIME LIMIT**

The absolute time limit shall be 1700 hours. No boat shall be finished after the expiry of the time limit. (Amends RRS 35)

**16 PROTESTS**

The Race Committee looks to each competitor to enter the race in the right spirit; be meticulous in observing the rules and complete the alternative penalty (or retire) immediately if they breach them.

**17 SPECIAL CONDITIONS**

No Extras shall be allowed, only a Mainsail and Headsails shall be used. Headsails shall not be set flying.

**18 PRIZES**

Prizes shall be presented at the RSYS Clubhouse after the finish of the race.

**19 RADIO COMMUNICATION**

- 19.1 All boats shall carry a marine band VHF receiver capable of receiving and transmitting marine VHF channels. Boats shall use the radio to report retirement from racing and may use the radio to request assistance in an emergency
- 19.2 The race officer may use VHF channel 74 to advise of general matters relating to the racing.

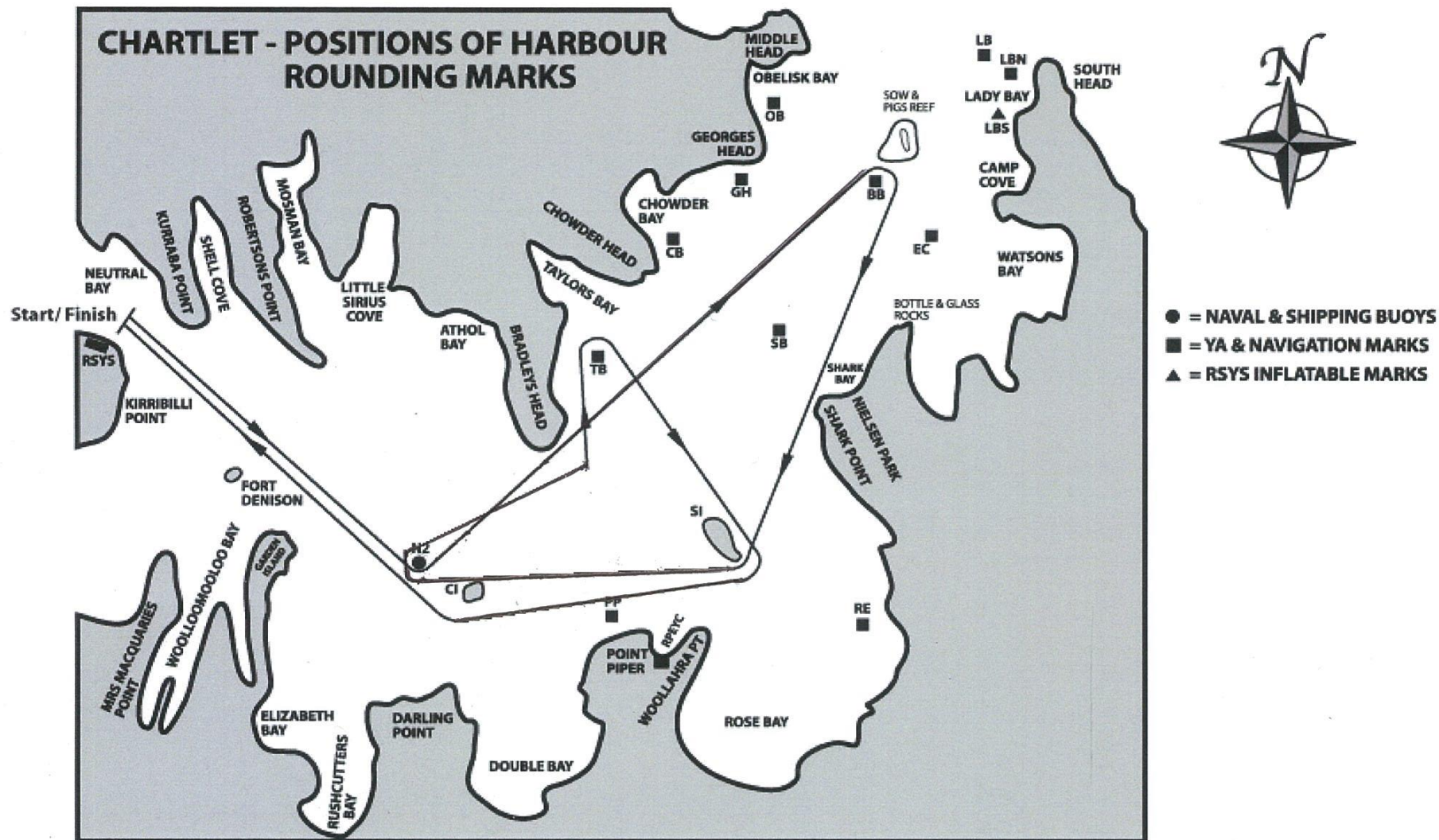
## **20 RESPONSIBILITIES**

- 20.1 **Risk Warning** - The Organising Authority advises owners, skippers and anyone who participates in yachting events conducted by the Organising Authority, that participation in the sport of yachting, whether racing or otherwise, can be dangerous and can result in harm, personal injury and property damage. The Organising Authority is not responsible for any harm or injury suffered by any person in any yachting event conducted by the Organising Authority of whatever nature. All participants acknowledge that competing in yachting events may be dangerous and may result in harm or personal injury and participate in such events aware of such dangers and voluntarily accept any risk of harm.
- 20.2 **Competitors Declaration** - It is the responsibility of owners and skippers to ensure that each boat nominated on the entry form complies with the 'rules' as defined in the Racing Rules of Sailing 2013-2016 (RRS).  
All competitors who sign the entry form in doing so have made a declaration to the Organising Authority that the nominated boat will at all times while racing comply with the requirements of Australian yachting and the Sailing Instructions, including:
- (a) RRS 46 and the responsibility of the person in charge of the boat, to ensure that the crew complies with RRS 46 and 56;
  - (b) the Yachting Australia Special Regulations;
  - (c) Third Party Property Liability Insurance and Third Party Personal Liability cover of not less than \$10,000,000 (ten million dollars) for any one incident. All insurance shall be maintained during the period of racing.
  - (d) the person who signs and lodges the entry form with the Organising Authority warranting to the Organising Authority that he or she will draw the attention of any person who competes on the yacht the subject of the entry form in any event conducted by the Organising Authority of the risk warning above;
  - (e) the person who signs and lodges this entry form with the Organising Authority acknowledging receipt of the risk warning above and releasing the Organising Authority from any claim or liability whatsoever for any harm or personal injury suffered by him, or by any person claiming through him, in any event conducted by the Organising Authority;
- 20.3 **Responsibilities**
- (a) All those taking part in these races do so at their own risk and responsibility. Specific attention is drawn to RRS 4 which states; "The responsibility for a boat's decision to participate in a race or to continue racing is hers alone". The RSYS, sponsors, the relevant Class Association, the Race Committee and other race officials are not responsible for any damage or injury either afloat or ashore.
  - (b) The RSYS, sponsors, the relevant Class Association, the Race Committee and other race officials are not responsible for the seaworthiness of a boat whose entry is accepted or the sufficiency or adequacy of its equipment.
  - (c) All those taking part in these races are reminded of their obligations as set out in the Yachting Australia Special Regulations clause 1.02 Owner's Responsibility.

## **21 COMMERCIAL SHIPPING**

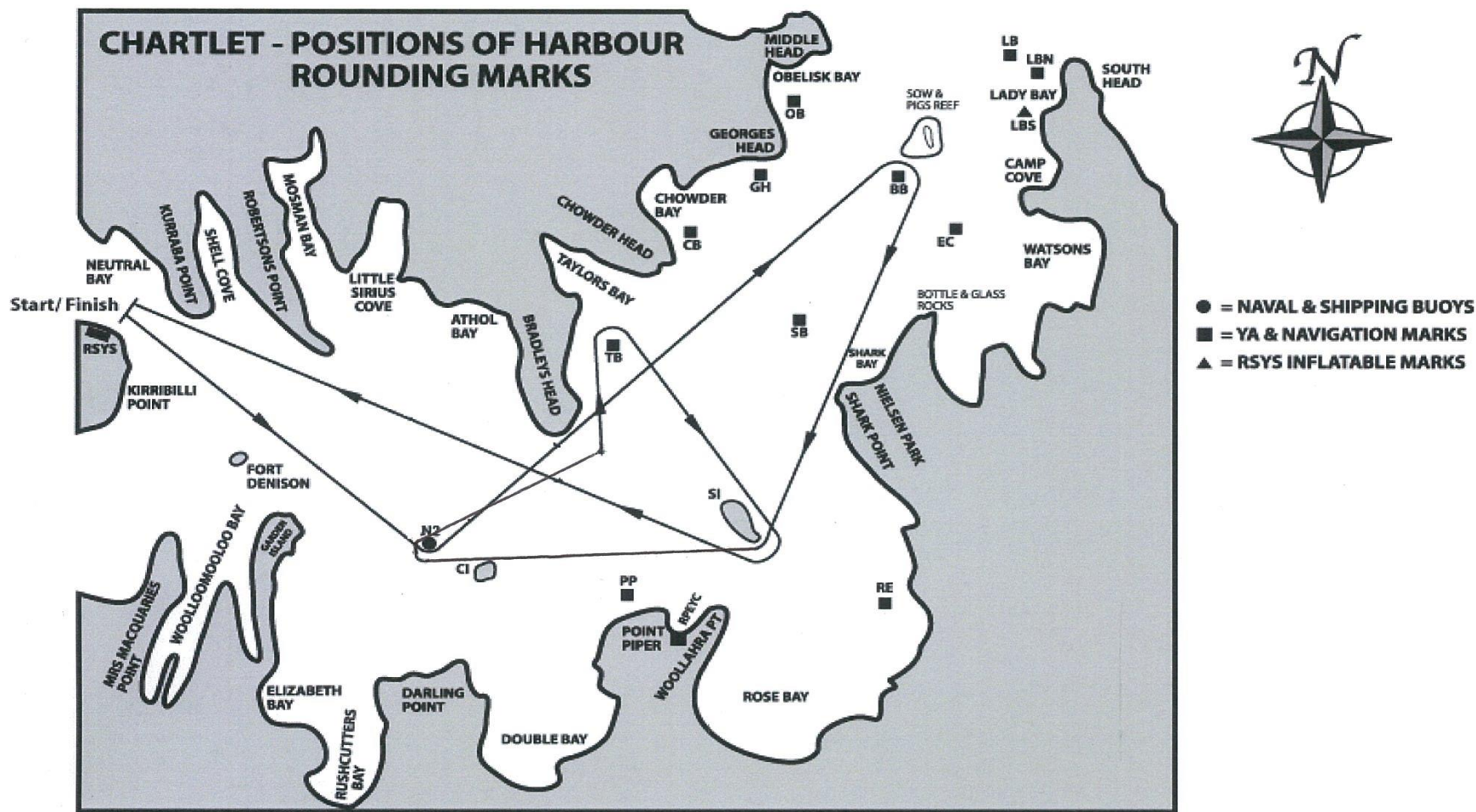
- 21.1 Yachts shall not interfere with the Commercial or Defense shipping of the Port. The attention of skippers is drawn to NSW Roads and Maritime Services regulations regarding the right of way of vessels entering or leaving port, ferries displaying orange diamonds and vessels engaged in towing. NSW Roads and Maritime Services regulations specify "Priority over Sail – some Commercial Ferries on Sydney Harbour display an orange diamond shape which grants priority of way over sailing vessels. Do not attempt to cross the path of an approaching ferry displaying this signal". Attention is drawn to the guidelines published in the appendices in this Handbook.
- 21.2 Boats found to have interfered with commercial shipping may be subject to action by the Race Committee in accordance with RRS 60.2.
- 21.3 All yachts must abide by traffic directions of NSW RMS Boating Service Officers. Any yacht directed to stop or alter course by NSW RMS Boating Service Officers as a result of an anticipated breach of the above rules, incident/collision or complaint shall do so immediately.
- 21.4 Any yachts reported by NSW Roads and Maritime Services as having contravened NSW Roads and Maritime Services regulations shall be disqualified without a hearing. (This amends RRS 63.1). Any alleged infringement of this clause shall not be grounds for protest by another competitor.

# CHARTLET - POSITIONS OF HARBOUR ROUNDING MARKS



Division 1 SFL – N2(P) - BB - SI - N2(S) - TB - SI - CI - SFL (approx. 11 miles)

# CHARTLET - POSITIONS OF HARBOUR ROUNDING MARKS



Division 2 SFL – N2(P) - BB - SI - N2(S) - TB - SI - SFL (approx. 10 miles)